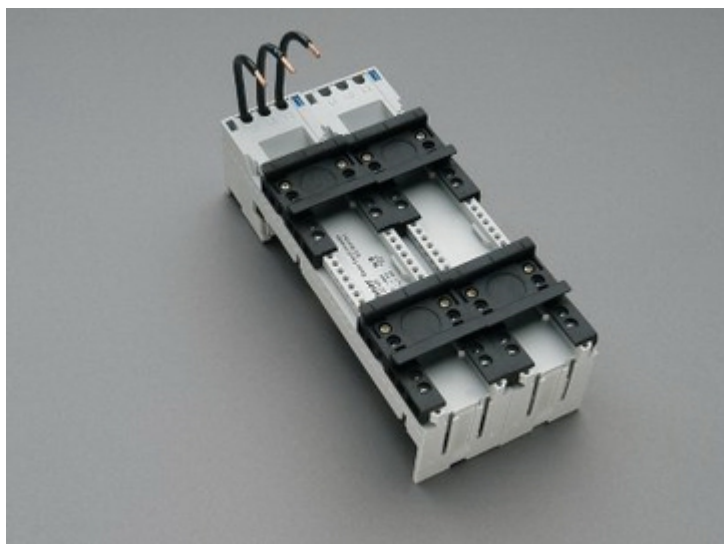


Adattatore EEC 25 A (32432)



Descrizione

Articolo

Cod.art.: 32432

EQUES® 60Classic

Adattatore EEC 25 A

con 2 guide DIN scorrevoli

90 x 200, con cavi AWG 12 (4 mm²)

per barre 12, 15, 20, 25, 30 x 5, 10 e barre profilate

Montaggio

60Classic

Gruppo di prodotti 05

Sottogruppo merceologico 21

Pz / conf. 2

EAN 4021267324322

Vantaggi prodotto

Conductor ends ultrasonically sealed.

Click mechanism when pushing onto the busbar.

Catalog page 2018 : 3.11

eCl@ss 6.1 27370304

27370304

ETIM 4.0 EC001531

ETIM 5.0 EC001531

Certificazioni

Norme

IEC 61439-1:2011

Omologazioni

CSA , UL , Germanischer Lloyd



for UL feeder circuits >250V

Type No.: EEC6025-L

UL file: E123577, UL category (for USA): NMTR <http://www.ul.com>

UL file: E123577, UL category (for Canada): NMTR7 <http://www.ul.com>

CSA file: 110285, CSA class: 3211-37 <http://directories.csa-international.org>

Omologazione CCC : no certification required

Dati prodotto

Valori elettrici

Corrente nominale (IEC): 25 A

Tensione nominale (IEC) AC: 690
V

Rated current (UL): 25 A

Rated voltage (UL) AC: 600
V

Power dissipation:

The power dissipation at a typical load of 80% of the rated current results to 1.2 W.

(The power dissipation for operation with rated current would be 1.9 W.)

rated isolation voltage U_i : 800
V

Tensione di picco U_{imp} : 6 kV

Tensione max. IEC AC: 800
V

Tensione max. IEC DC: 800
V

short-circuit withstandability: the short-circuit capacity of the combination of adapter and motor starter depends on the motor starter

SCCR: 30kA @ Comb. Mtr. Cntlr. NKJH 12,5A, 600Vac
50kA @ Comb. Mtr. Cntlr. NKJH 32A, 480Vac
65kA @ Comb. Mtr. Cntlr. NKJH 16A, 480Vac
65kA @ Comb. Mtr. Cntlr. NKJH 25A, 480Vac

Valori meccanici

L x H x P: 90 x 200 x 63

Peso: 57.1 kg/100

Poli: 3 poli

per barre: 12, 15, 20, 25, 30 x 5, 10 e barre profilate

Proprietà materiali

Involucro: temperature stability 125°C,
self-extinguishing in acc. to UL 94,
creepage resistance CTI 600,
halogen-free

Guida: temperature stability 125°C,
DIN: self-extinguishing in acc. to UL 94,
creepage resistance CTI 550,
halogen-free

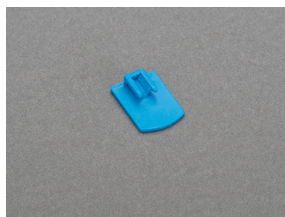
Viti: screw +/- (PZ1), galvanized, chromized

Conductor insulation: temperature-resistant up to 105 °C

Avvisi e consigli

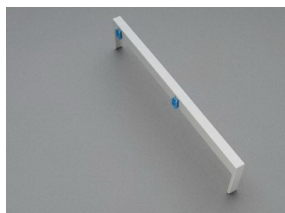
For compact mounting of complete motor circuits with commercially available switchgear and safe mechanical and electrical connection to the busbar system.

Accessori



32969

Bloccaggio laterale per guide DIN



32963

Modulo laterale per adattatori EEC

per entrambi i lati

9 x 200