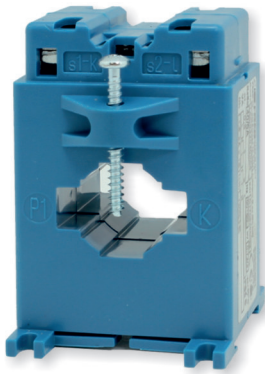




# TA 32x10 CON USCITA 4-20mA 32x10 CT with 4-20mA Output

# MAC032



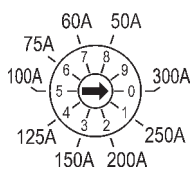
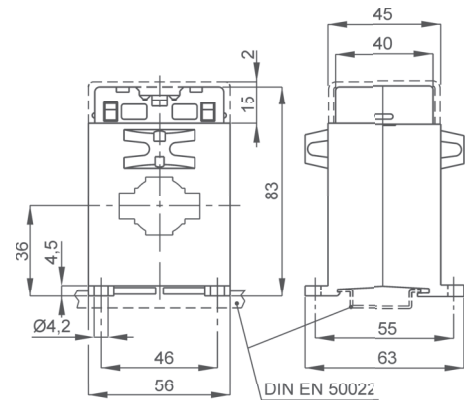
## DATI TECNICI - Technical data

uscita	output	4-20mA passiva/passive (2fili/wires)
classe di precisione	accuracy class	1
tempo di risposta	response time	<200msec
ondulazione residua	residual ripple	<1%p.p.
sovraccarico permanente	continuous overload	100% I <sub>n</sub>
sovraccarico di breve durata	short-time overload	20 I <sub>n</sub> (1sec)
frequenza di riferimento	reference frequency	45÷65 Hz
consumo circuiti di corrente	current circuits consumption	<0,5VA
temperatura di funzionamento	operating temperature	-10...0...+45...+50°C
temperatura di magazzino	storage temperature	-30...+70°C
custodia in materiale termoplastico autoestinguente	self extinguishing thermoplastic material	UL 94-V0
isolamento galvanico	galvanic insulation	completo/full
categoria di sovratensione conforme a	overvoltage category according to	CAT III 300V, CAT II 600V P.D. 2 EN 60688

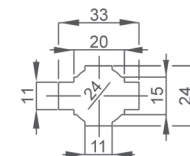
## CODICI DI ORDINAZIONE - Ordering codes

## DIMENSIONI - Dimensions

Portate selezionabili Selectable range	Codice - Code	
	Sinusoidale - Sinusoidal	TRMS
50 A	<b>MAC032PROG42</b>	<b>MRC032PROG42</b>
60 A		
75 A		
100 A		
125 A		
150 A		
200 A		
250 A		
300 A		



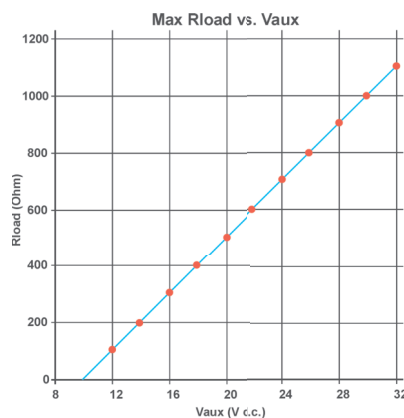
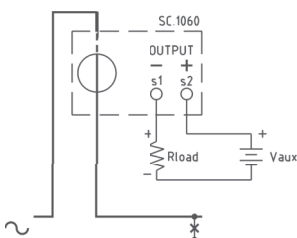
Selettore portate  
Range selector



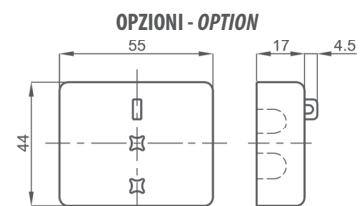
kg 0,25 ...0,30

## SCHEMI DI INSERIZIONE - Wiring diagrams

## NOTE - Note



- ACCESSORI IN DOTAZIONE**  
 - viti per fissaggio TA alla barra  
 - cappuccio di protezione per vite fissaggio
- SUPPLIED ACCESSORY**  
 - CT fixing set for busbar mounting  
 - protective caps for CT fixing



Coprimorsetti sigillabile cod. **9SBMCTA**  
 Sealable terminals cover cod. **9SBMCTA**