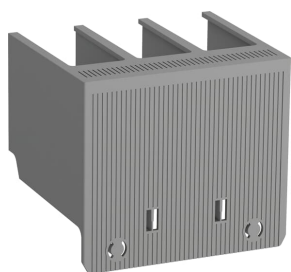




PRODUCT-DETAILS

# LT140-30L

## LT140-30L Terminal Shroud



General Information	
Extended Product Type	LT140-30L
Product ID	1SFN124203R1000
EAN	7320500482339
Catalog Description	LT140-30L Terminal Shroud
Long Description	LT140-30L Terminal Shroud

Ordering	
Minimum Order Quantity	1 piece
Customs Tariff Number	85369001

Popular Downloads	
Data Sheet, Technical Information	1SBC100173C0201
Instructions and Manuals	1SFC100015M0201
CAD Dimensional Drawing	2CDC001079B0201

**Dimensions**

Product Net Width	90.7 mm
Product Net Depth / Length	74.5 mm
Product Net Height	78.6 mm
Product Net Weight	0.07 kg

**Technical**

Terminal Type	Screw Terminals
Suitable For	AF116 AF140 AF146 AF116B AF140B AF146B

**Material Compliance**

Conflict Minerals Reporting Template (CMRT)	9AKK108467A5658
REACH Declaration	2CMT2021-006202
RoHS Information	2CMT2021-006277
RoHS Status	Following EU Directive 2011/65/EU
WEEE B2C / B2B	Business To Business
WEEE Category	Product Not in WEEE Scope

**Certificates and Declarations**

cUL Certificate	20120925-E36588
Declaration of Conformity - CE	2CMT004895
Declaration of Conformity - UKCA	2CMT2020-006120

**Container Information**

Package Level 1 Units	bag 1 piece
Package Level 1 Width	90.7 mm
Package Level 1 Depth / Length	78.6 mm
Package Level 1 Height	74.5 mm
Package Level 1 Gross Weight	0.09 kg
Package Level 1 EAN	7320500482339

**Classifications**

Object Classification Code	X
ETIM 4	EC002498 - Accessories for low-voltage switch technology
ETIM 5	EC002498 - Accessories for low-voltage switch technology
ETIM 6	EC002498 - Accessories for low-voltage switch technology
ETIM 7	EC002498 - Accessories for low-voltage switch technology
ETIM 8	EC002498 - Accessories/spare parts for low-voltage switch technology
eClass	V11.0 : 27371003
UNSPSC	39122221

IDEA Granular Category Code (IGCC)	5219 >> Switch part or accessory
E-Number (Finland)	3706568
E-Number (Norway)	4117847
E-Number (Sweden)	3210179

---

## Categories

---

Low Voltage Products and Systems → Control Products → Contactors → Block Contactors

