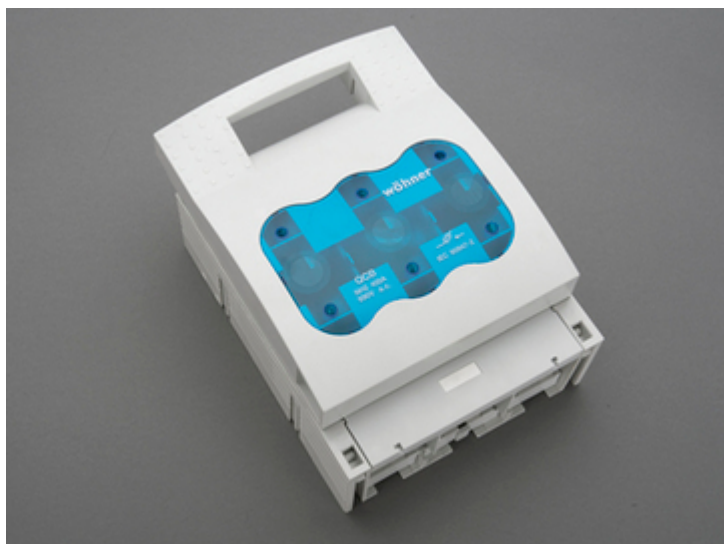


Base sezion. per fus. NH2, 400 A, per pannello (33202)



Descrizione

Articolo

Cod.art.: 33202

QUADRON® Panel

Base sezion. per fus. NH2, 400 A, per pannello
vite M10

Montaggio

Pannello / piastra di fondo

Gruppo di prodotti 09

Sottogruppo merceologico 09

Pz / conf. 1

EAN 4021267332020

Vantaggi prodotto

Disconnectors are equipped with arc chambers.

The shock protection is split into 2 for safe connection of the conductors.

Self-closing inspection holes are available in the cover.

Catalog page 2018 : 6.13

eCl@ss 6.1 27142108
27142108

ETIM 4.0 EC001040

ETIM 5.0 EC001040

Certificazioni

Norme

IEC 60947-1:2007 + A1:2010 + A2:2014

IEC 60947-3:2008 + A1:2012 + A2:2015

Omologazioni

IEC (CB) , UL , Germanischer Lloyd , KEMA , CCC



for UL feeder circuits >250V

Type No.: LTS-2

UL file: E230163, UL category (for USA): IZLT2 <http://www.ul.com>

CCC certificate: 2004010302117262

Dati prodotto

Valori elettrici

Corrente nominale (IEC): 400 A

Tensione nominale (IEC) AC: 690 V

Tensione nominale (IEC) DC: 440 V

Rated current (UL): 400 A

Rated voltage (UL) AC: 600 V

Categoria AC-23B (400V)
d'impiego AC: AC-22B (690V)
AC-21B (690V)
AC-20B (1000V) at pollution degree 2

visible information required if used at more than 690V AC: do not switch under load

Categoria DC specifications: 2 current paths (L1,L3) in series
d'impiego DC: DC-22B (440V)
DC-21B (440V)
DC-20B (1000V) at pollution degree 2

visible information required if used at more than 440V DC: do not switch under load

Power dissipation:

The power dissipation at a typical load of 80% of the rated current results to 14.1 W.

(The power dissipation for operation with rated current would be 22 W.)

rated isolation voltage U_i : 800
V

Tensione di picco U_{imp} : 6 kV

Tensione max. IEC AC: 800
V

Tensione max. IEC DC: 800
V

rated peak withstand current I_{pk} : 27.2 kA

cond. rated short-circuit current with fuses: 50 kA / 690V

approved with fuse links of characteristics: gG

Bemessungskurzzeitstromfestigkeit I_{CW} : 13,2kA / 1s

SCCR: 100 kA

for fuse links IEC 60269-2-1 (I) / DIN VDE 0636-201 size 2 up to 34W power dissipation

Special operating conditions corresponding to IEC / EN 61439-1 may yield to faulty activations of pilot switches and fuse monitors. The operating conditions have to be considered for the analysis of status signals.

Entsprechend den angegebenen AC- und DC- Schalteigenschaften und unter Berücksichtigung der Überlastbedingungen, sind gewisse Abstände zu geerdeten Metallteilen einzuhalten. Nähere Informationen auf Anfrage.

Bei Verwendung als Trennschalter ist die Einhaltung der Abstände nicht erforderlich.

Degree of protection IP30 at front, degree of protection near terminal depends on installation

Valori meccanici

L x H x P: 210 x 288 x 128

Peso: 362 kg/100

Poli: 3 poli

front degree of protection: IP30

Conessioni

viti M10 :

C. serr. 30 - 35 Nm

Accessories:

Clamp connection: Cu 120-240mm² s(r), f+AE; lam. Cu 21x1-14; 6-8Nm torque

single wedge clamp terminal: Cu, Al* 50-150/120-240mm² s(r), s(s), f, f+AE; 6-8Nm torque

double wedge clamp terminal: Cu 2x 70-120mm² s(r), s(s), f+AE; 6-8Nm torque

*Connections are not maintenance-free if aluminium conductors are used.

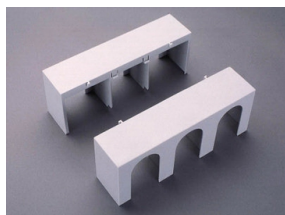
Proprietà materiali

Corpo base:	temperature stability 125°C, self-extinguishing in acc. to UL 94, creepage resistance CTI 600, halogen-free
Protezione contro contatto accidentale:	resistenza alle temperature fino a 125°C, ignifugo secondo UL 94, tenuta alle correnti di fuga CTI 200
Coperchio:	temperature stability 125°C, self-extinguishing in acc. to UL 94, creepage resistance CTI 200, halogen-free
Contatti:	spring-loaded copper contacts, silver plated

Altre versioni

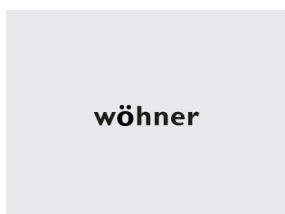
Variant with electronic fuse monitoring: 33 331 Variant with electromechanical fuse monitoring: 33 150

Accessori



33143

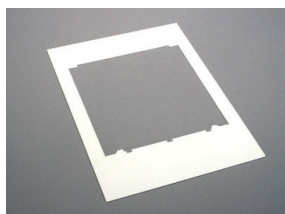
Copertura per capicorda, innestabile in alto / basso
per QCB-NH2



wöhner

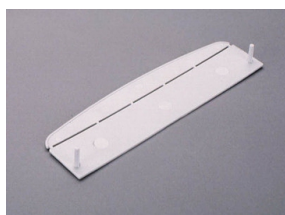
33146

Morsetto a prisma, doppio
2x 70 - 120 mm²
Gr. NH 2



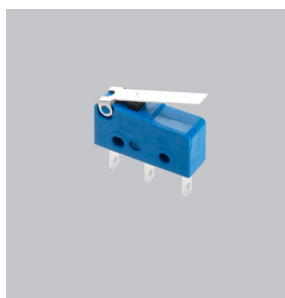
33153

Cornice
248 x 330
Gr. NH 2



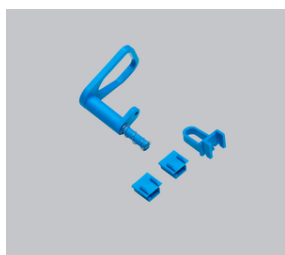
33155

Protezione per mani per basi sez. NH, Gr. NH 1- 3
per la protezione posteriore del coperchio



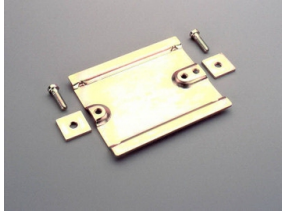
33156

Microswitch per segnal. pos. coperchio
contatto in commut. 250 V AC / 5 A, 30 V DC / 4 A



33157

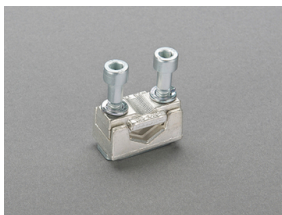
Bloccaggio coperchio
per filo sigillo oppure 3 lucchetti di diametro staffa 4 -7 mm
Gr. NH 1 - 3

**33158**

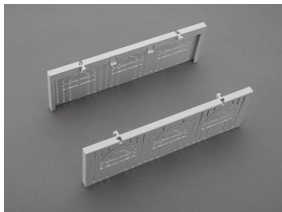
Kit di fissaggio rapido
per fissaggio tra 2 guide DIN con distanza 125 mm o 150 mm
Gr. NH 1 - 2

**33164**

Connessione a brida per cavi Cu
120 - 240 mm²
QCB-NH2, LTS-F 400, LTS 630

**33167**

Morsetto a prisma, per cavi Cu / Al
50 - 240 mm²

**33418**

Copertura per zona di connessione
per basi sezionabili di Gr.NH 2

**33271**

Estensione del collegamento
Gr. NH 1 - 2